



All-in-one, configurable weather information solution

Lido Weather

Weather affects the aviation industry more so than almost any other transport industry. And as significant weather events increase in frequency and severity, pilots require more support in making timely tactical decisions. Lido can support your airline and pilots to overcome this challenge now and in the future.

The Lido Weather module – available for both Windows and iPadOS* – can display two types of weather data: Observations and Advisories. Furthermore, various weather phenomena can be displayed on the enroute map, visualized as polygons. Currently, the following can be displayed:

- Convection (NowCast)
- Cloud Top Height
- SIGMETs
- Volcanic Ash Advisory
- Tropical Cyclone Advisory

Additionally, textual airport weather can be displayed for each airport from your airline's library. METAR, TAF, and D-ATIS will be shown if the information is available on the Lido Weather Server.

Key benefits & features



Weather data depiction

Improved situational awareness for timely inflight tactical decisions



Reduced data consumption

Corridor weather along your flight path to reduce data traffic by a factor 10



Worldwide coverage

Worldwide weather depiction, and possibility for off-connection weather data display



Highest quality

Renown and trusted weather providers, ensuring highest possible data quality



Improved situational awareness

Colored polygon depiction of weather in light and dark mode, in accordance with the Human Machine Interface standard

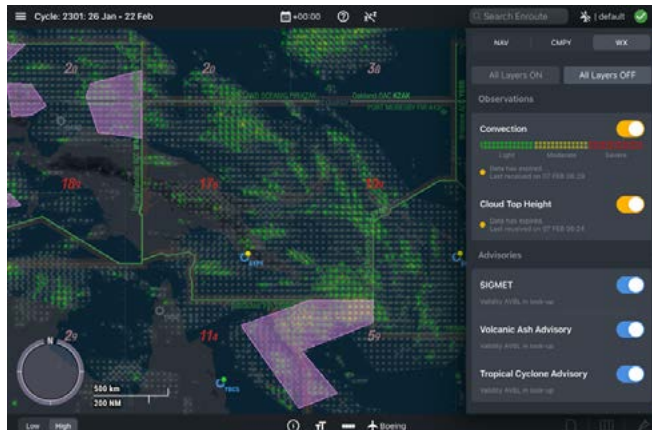
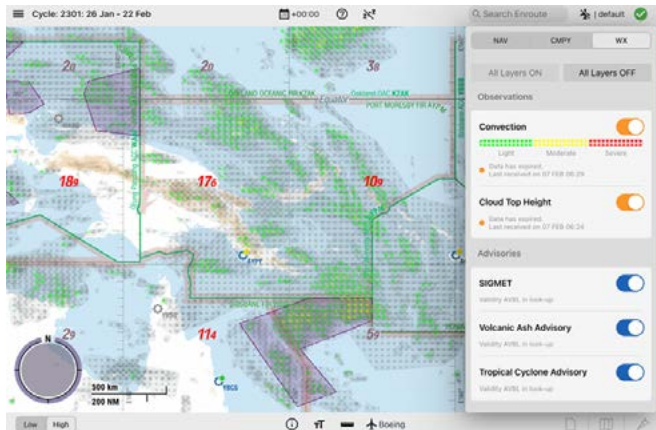


Expired weather depiction

Expired weather with a distinct pattern in a case of no connectivity during the flight

* Expired weather only available on iPadOS

Improved situational awareness for in-flight tactical decisions



The expired weather feature (displayed in light and dark mode) enables the depiction of expired weather phenomena in the enroute map for users with no data connectivity.

Availability and validity of weather data

The depiction of weather data is possible due to the connection to the Lido Weather server. This connection can only be established when the device is connected to the internet.

Currently, the download of weather data does not require any manual action from the user. Both the connection and data download is triggered automatically.

Furthermore, we provide the option to download an entire weather package that can be stored on the device for depiction, even if the network is unavailable. This feature depends on the type of weather data (Observations vs Advisories), the validity of the phenomena, and the providers.

Lido mPilot 6.3 introduces the Expired Weather feature, which allows weather phenomena to be displayed as polygons on the enroute map, after the associated data has expired, when no data connectivity is available.

→ For more information please contact marketing@LHsystems.com

Observation and forecast weather depiction

Observation is a weather type that reflects what was observed over a particular timeframe, over a particular area. It is based on weather information reports issued by weather stations across the globe, agency publications, satellite images (including post-processing), and pilot report (PIREP).

Forecast is a weather type that provides a prediction about what is likely to happen in the next timeframes over a particular area. It is based on a computerized model, which produces a prediction over future timeframes taking into account analysis, atmospheric models, the post-processing of satellite images, and measurement on stations.

Software and hardware requirements

- iPadOS 16
- Lido mPilot 6.3
-

Download Lido mPilot

