

# Your company information displayed where you want it

## Company Layers for Lido mPilot

### Improved dynamic workflows

The all-new Company Layers module allows you to create and manage specific OM-C information, such as security airspaces, decompression procedures, or escape routes, which is then displayable on the Lido mPilot Enroute Map.

A dedicated web application allows your administrators to create content as you desire, which can be made available to your pilots instantly after publishing. Pilots are able to easily browse the layers via the new CPMY section and conveniently toggle the Company Layer visibility on their devices.

### Create and manage overlays

Your personalized Company Layers module is set up on the Lido Web Portal via the "App Content Management" section. Here you can design your layers via a convenient online design tool. It is also possible to import externally generated layers.

A layer may be disabled at any point via the Web Portal. Disabled layers are not distributed to the Lido mPilot application, and expired information is automatically hidden.

## Key benefits & features



**Display & style company OM-C**  
Represent important information where you want it



**Add textual information**  
Textual information can be visually represented on the Enroute Map



**Convenient online design tool**  
Design your Company Layers to suit your airline needs



**Import external content**  
Ability to import externally generated layers

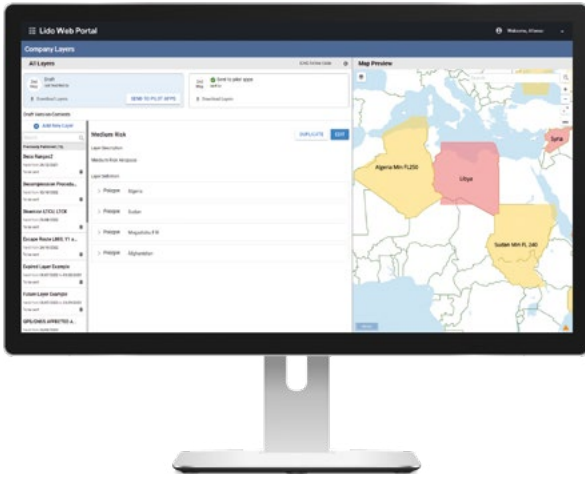


**Set validities for the information**  
Expired information is automatically hidden based on validities

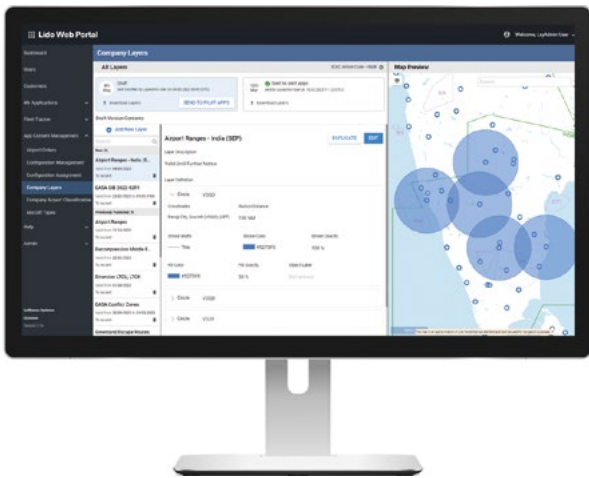


**Simplify processes**  
Simplify back office processes and documentation maintenance

## Lido Web Portal Company Layers module



## Lido mPilot displaying Company Layers



### Software and hardware requirements

- Lido mPilot 6.2 or higher
- Order required for activation on Lido Web Portal

→ For more information please contact [marketing@LHsystems.com](mailto:marketing@LHsystems.com)

### Download Lido mPilot

