



Lufthansa Systems

Easily accessible, high-quality aeronautical data

Lido Developer Portal

The Lido Developer Portal serves as a comprehensive **hub of aeronautical data** tailored for developers across a range of industries and sectors, including airlines, advanced air mobility, flight planning, EFB applications, mapping solutions, and numerous others.

Seamless access to our standardized and quality checked aeronautical data, which is **produced according to EASA certified processes**, is facilitated via state-of-the-art **APIs**. This enables effortless integration into third-party applications.

The Lido Developer Portal offers a **scalable, cloud-based** solution that embraces application-agnostic processing. Our APIs are crafted to simplify integration, eliminating the burden of handling complex aviation standards. Lido's versatile data can be seamlessly applied across a spectrum of systems and applications.

Key benefits & features



Easily accessible

Data is available as a variety of stand-alone products to serve your specific operational requirements



Seamless application

Versatile data can be effortlessly utilized thanks to our geoJson enabled formats



Access current data wherever you need

Databases are updated every AIRAC cycle with worldwide coverage



Reliable data based on EASA certified processes

Data is compliant with all relevant aviation industry standards and is protected by state-of-the-art security measures



Continuous development

New content is continuously added through APIs and endpoints to efficiently support your current business needs



You only pay what you use

Price tiering enables cost effective data retrieval according to your needs

Worldwide Coverage

Visualization of obstacles from the Lido Obstacle API where brighter areas indicate a higher density of obstacles



Basemap: Esri World Imagery Firefly

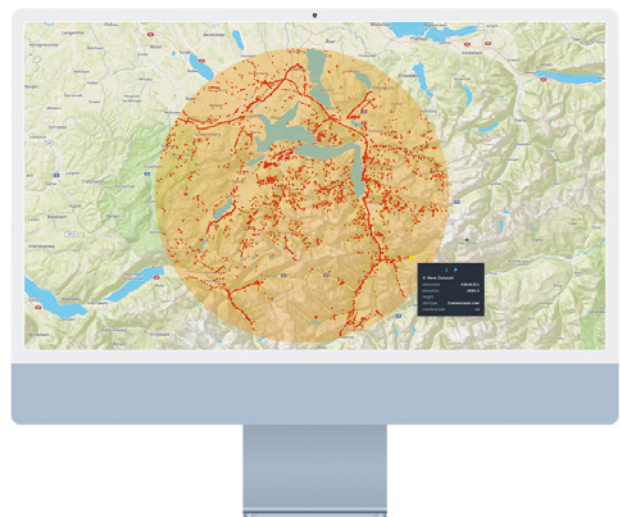
Lido Obstacle API

Lido Obstacle API enables access to our **standardized** obstacle database, which is a global collection of enroute and aerodrome obstacles extracted from **authoritative sources**, such as Aeronautical Information Publications (AIPs), electronic Terrain and Obstacle data (eTOD), and NOTAMs.

A collection of different API endpoints offers flexible data querying including **lookup by aerodrome, point & radius, or polygon**. Each obstacle is described with more than **40 attributes**, such as elevation and height information, lighting and marking details, construction status, and many more.

Obstacle data provided by our Lido Obstacle API can be used for a variety of systems and applications, including drone operations, charting, flight operations, to name a few.

→ For more information please contact marketing@LHsystems.com



Lido Developer Portal allows the user to retrieve obstacles in the vicinity of an aerodrome (up to 25 nautical miles)