



SchedConnect

Benefit from ideal codeshare connections

Codesharing is a winning process for you and your passengers. You increase your revenue by keeping travelers within your network, while your passengers enjoy smooth connecting flights. But codeshare management is an extremely complex task. Flight schedules are subject to frequent changes, leading to constant adjustments to your and your partners' schedules.

Realize savings and increase your revenue

Your flight schedule is a result of your process chain, starting with commercial and operational planning, codeshare management and ending with schedule delivery. Your schedule is the backbone of all the business processes within your airline. Its quality is one of the key basics for your internal effort and costs, passenger bookings and revenue.

Increase your revenue by up to 15 million euros a year

- Calculate ideal codeshare connections to improve your position in the CRS display
- Identify potential codeshare connections in your existing network to increase your bookings
- Synchronize your and your partners' schedules to maintain or improve quality and reputation levels

Reduce your costs

- Automate your processes for schedule receipt, codeshare assignment and, schedule delivery
- Reduce the error rate and effort of manual intervention in your schedule management process
- Avoid customer claims and pricing errors with optimized codeshare connections

Shorten your time to market

- Improve efficiency in your internal processes using a high degree of automation
- Benefit from high-speed schedule synchronization between operating and marketing flights
- Profit from automated schedule delivery according to your and your partners' business needs

Features and functions

Codeshare management

The sophisticated real-time codeshare connection builder (Codeshare Optimizer) is the core of SchedConnect and allows you to get the maximum out of your codeshare agreements. The algorithms calculate your best available flight connections based on up-to-date flight schedules, rules, parameters, and general industry data such as minimum connection times. The result is shown to the user with an automated adjustable preference evaluation and proposed partner flight number assignment. The system generates your marketing flights automatically, thereby significantly speeding up your process for codeshare handling. Codeshare conflicts e.g. usage of non-authorized flight numbers or equipment are detected and displayed clearly for user review.

The high degree of automation in both processes, the addition of codeshare relations (DEI010) to operating flights, and the generation of marketing flights (DEI050) shortens the time to market for all existing and new codeshare arrangements.

Using the Codeshare Optimizer scenario mode allows the analysis and evaluation of new codeshare partners or modified codeshare rules for existing partners. Complex codeshare agreements can be set up easily one-to-one within SchedConnect.

'SchedConnect is very reliable and speeds up our work significantly.'

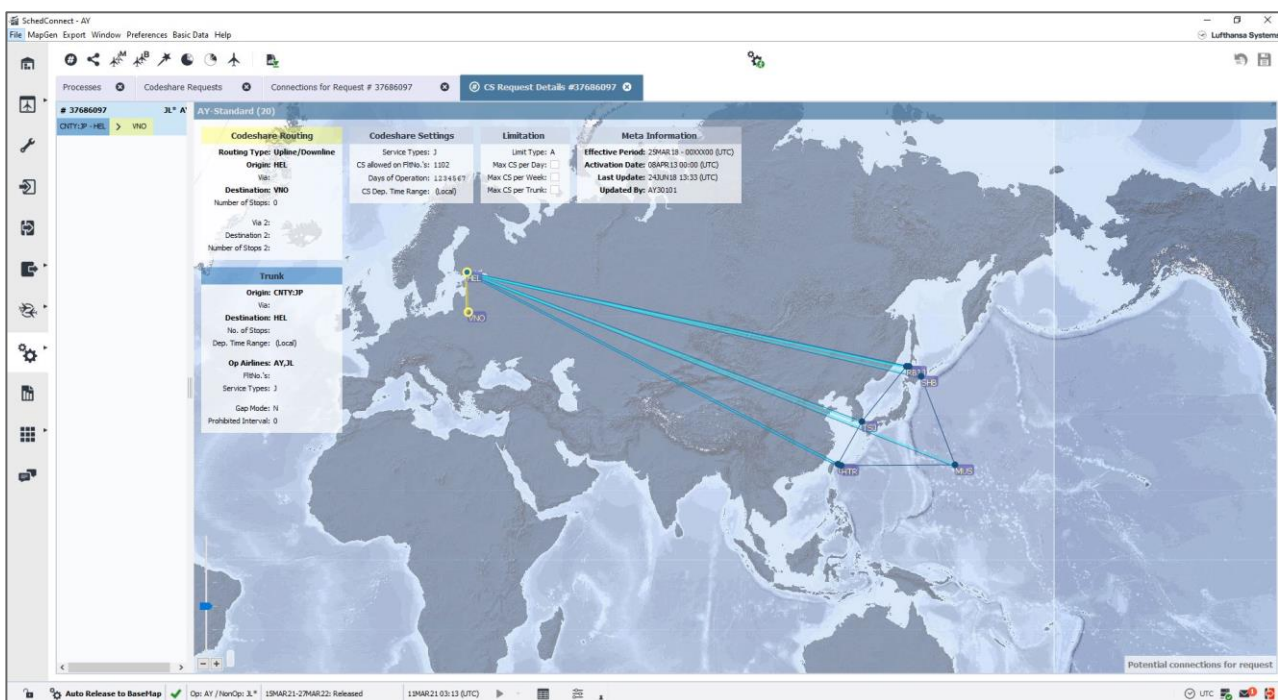
Codeshare Manager/Analyst at a European Network Carrier

Comprehensive schedule exchange

SchedConnect achieves the continual exchange of flight information to and from all your partners and systems requiring schedule data such as scheduling, flight planning, or inventory. To support your codeshare management process, schedules from your partners are loaded automatically into the system without user action.

Your schedule distribution process is controlled by user-configurable rule sets. SchedConnect provides the possibility to set up schedule distribution rules for SSIM7 distribution and schedule message (ASM/SSM) delivery. The system allows the definition of schedule filter criteria, output parameters, trigger events, and recipient information for each kind of distribution rule.

Especially if both you and your codeshare partner are using SchedConnect, the multi-customer philosophy achieves seamless and real-time schedule synchronization; the traditional method of schedule data exchange using SSIM, SSM, or ASM is no longer needed.



Graphical visualization of codeshare agreement

Features and functions

High level of automation

The user can define the process automation in terms of codeshare calculation, schedule delivery or report generation according to their own business rules. All partner schedules are loaded automatically within the system. Schedule distribution, codeshare connection building and marketing flight generation can be automated as well.

Modular concept

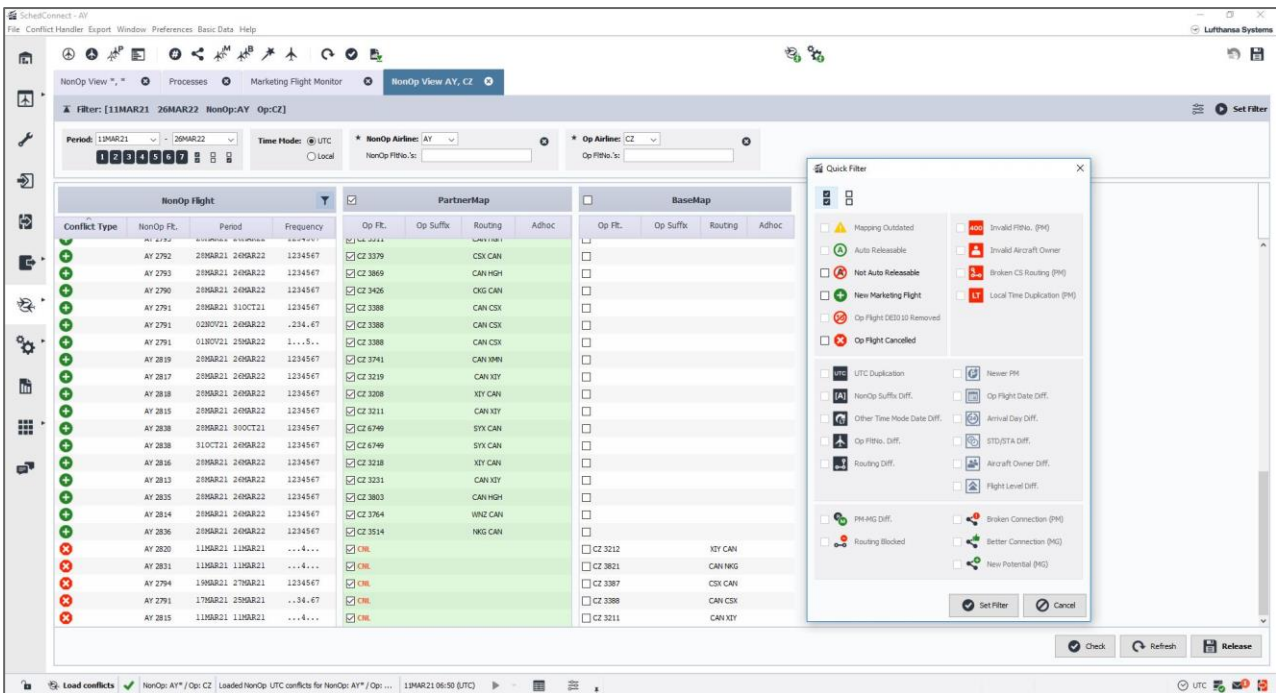
The system is based on a modular concept. The individual components can be combined to support your business processes for codeshare management (for your operating and/or your marketing flights) and schedule distribution. Besides these main modules, SchedConnect also offers schedule enrichment and comparison, schedule quality checks and merge, intelligent aggregation of related schedule changes, and a reporting facility for user-created statistics on schedules.

Multi-tenant philosophy

SchedConnect is a multi-tenant environment. Each customer has a private partition to work independently. No other customer has access to the private partitions of the others. After publication, customers' schedule data are transferred from the private to the public area within the system. All SchedConnect users have access to this common part of SchedConnect, use the same source of schedule data, the same set of industry data such as Minimum Connection Times (MinCT) or Daylight Saving Times (DST), and the same algorithms.

Central flight repository

SchedConnect's central schedule database contains real-time schedules of all customers and all schedules of their codeshare partners. The public schedule database becomes your central source for all schedule deliveries to internal and external recipients, e. g. codeshare partners, OAG or Cirium, inventory or check-in.



SchedConnect detects conspicuities in marketing flights

System integration

System integration

Because SchedConnect is based on IATA standard interfaces such as SSIM, ASM, or SSM, it is quite easy to implement the product in an existing systems landscape. In addition, the solution provides several parameters which allow variation from this standard, if required.

SchedConnect offers a dedicated and intelligent interface to Amadeus' Altéa and Sabre Sonic Inventory to minimize the potential effort with re-accommodation problems.

System requirements

SchedConnect is offered as an Application Service Providing(ASP) model, delivering 24/7 server operation, clear service levels and an up-to-date infrastructure ASP service. To access the system, PowerClient, and WebClient are provided with the following minimum system requirements:

- Personal computer with a 2 GHz processor, 300 MB RAM, 400 MB disk space
- Super VGA (1024 x 768) or higher-resolution monitor
- Microsoft Windows 8 or Windows 10
- State-of-the art browser supporting common web standards such as HTML5, CSS3 and JavaScript (ES6). Recommended are latest versions of Mozilla Firefox or Chrome
- Two Mbit/s bandwidth network connection for up to ten concurrent users

'We now have additional time in schedule publication process for codeshare analysis due to faster runtime provided by SchedConnect. There is increased opportunity to see any data issues before publication. There is no longer any need for internal IT coordination to complete the codeshare assignment process.'


Codeshare Manager/Analyst, United Airlines

'SchedConnect consists of a unique technique and a great business model. Due to the fact that many other airlines have this tool, it's even more competitive. The "We-are-one-family" thinking model among SchedConnect airlines is fantastic. The annual user group expresses that very much.'

Schedule Manager/Analyst, Scandinavian Airlines

'I believe that reliability is the main issue. SchedConnect as tool and the support behind are truly excellent throughout our time working together, seven days a week (24/7) since July 2008.'

Schedule/Codeshare Manager at EgyptAir

 **Are you interested in increasing your revenue as well as saving costs by improving your codeshare management?**

Contact us to receive more information about SchedConnect.

marketing@LHsystems.com

NetLine

→ **NetLine/Plan**
Network planning solution

→ **SchedConnect**
Codeshare management

→ **NetLine/Ops ++**
Operations control

→ **NetLine/Sched**
Schedule management

→ **NetLine/Crew**
Crew management

→ **NetLine/Load**
Weight & balance