






# Navigation charts by aviation professionals, for aviation professionals

## Lido Charting Philosophy

Our state-of-the-art Lido charts provide pilots with only **relevant flight information**, leading to an **increase in efficiency** and **reduction of pilots' workload**. The charts are generated electronically using the latest technology, and are **created from a comprehensive worldwide geographic information database**, containing all obstacle and topographical data relevant for aviation, as well as all required **aeronautical source data**, such as AIP, NOTAM and airline data.

The Lido charting standard was developed by **navigation experts in collaboration with pilots, licensed dispatchers and IT specialists**. Information required "for general aviation only" has been omitted from the charts in order to provide pilots with a clear and decluttered source of relevant and up-to-date information.

## Key benefits & features

-  **Charts to scale**  
Supporting safer acceptance of direct clearances request from or issued by ATC in all weather conditions
-  **Intuitive color coding**  
Smart terrain depiction leading to increased situational awareness
-  **MSA depiction**  
Depiction of embedded procedures and associated MSAs eases own-ship plotting in relation to the procedure and surroundings
-  **Magnetic North up**  
Avoidance of mental conversion required for flying with geographic-oriented charts in a "magnetic-driven" cockpit
-  **Standardized coding rules**  
Consistent and intelligible data

# Enhance safety and efficiency

Lido charts are created especially for use in commercial aviation. They support pilots by displaying only relevant information and possessing an intuitive layout. Color schemes and grouped data also help in reducing pilots' workload. In addition to the design, Lido charts embed elements which enhance the performance and increase efficiency of pilots, such as MSA projection on airfields or the magnetic north up charting orientation.

## User friendliness

The Lido Charting Philosophy includes several aspects which offer better usability:

- intuitive color coding,
- no repeated or redundant information on charts,
- charts facing magnetic north to reduce unnecessary conversion, and
- use an intuitive layout with self-explanatory symbols and coding allowing for fast perception of relevant information.

## Efficiency enhancements

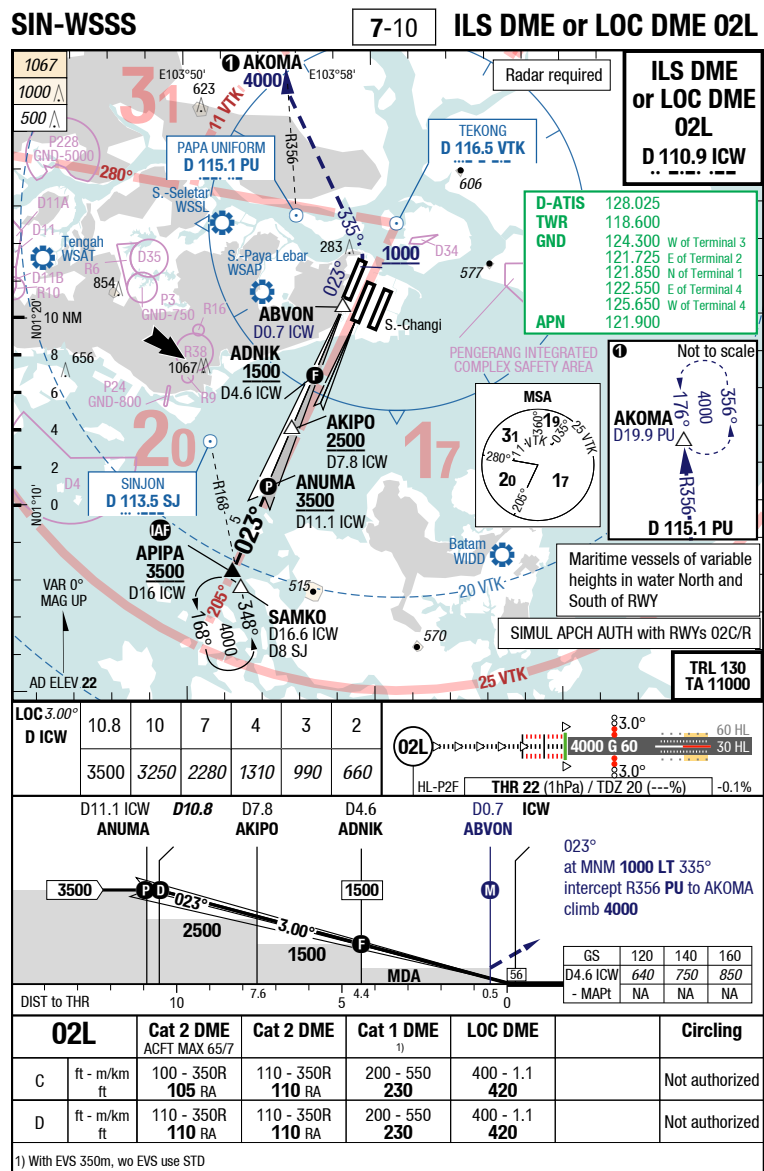
The Lido Charting Philosophy can help your pilots increase their efficiency by:

- projecting MSA on the airfield for easy identification of altitude, and
- integrating EASA-certified obstacle database within the chart production, allowing for a worldwide depiction of consistent topographical and obstacle information.

→ For more information please contact [marketing@LHsystems.com](mailto:marketing@LHsystems.com)

Singapore Singapore Changi

IAC



Changes: MSA, OBST, Editorial

Lido IAC of Singapore Changi Airport

© Lido 2021

© Marketing & Communications, Lufthansa Systems GmbH 0032201