



## Don't lose sight during low visibility operations

### Lido Desktop Assessment Service

Avoid costly flight demonstrations and the time intensive aggregation and analysis of different data sources for your low visibility operations (LVO).

With new EASA regulations, it is possible to **demonstrate LVO compliance** by performing a desktop assessment of aircraft and runway relevant data. This process compares the properties of the runway and its surroundings to requirements dependent on the aircraft type and equipment.

The necessary data to carry out such an analysis is frequently incomplete or missing in official sources. Extraction and comparison of the data, if available, typically involves a lot of manual effort.

The Lido Desktop Assessment Service uses Lufthansa Systems' **EASA certified terrain, obstacle and airport data** in an automated process, leading to the **most reliable and accurate suitability decisions**. Due to their global coverage, these datasets make it possible to perform assessments **for any published runway worldwide**.

### Key benefits & features



#### EASA certified data

Powered by EASA certified datasets of Lido terrain, obstacle and airport products



#### Worldwide coverage

Assessments can be generated for any published runway on the globe



#### Detailed results report

Lists key statistics and graphs as well as the resulting suitability decision for every assessed runway



#### Cyclic monitoring

Option to monitor used data every AIRAC cycle to detect changes, which trigger a new analysis

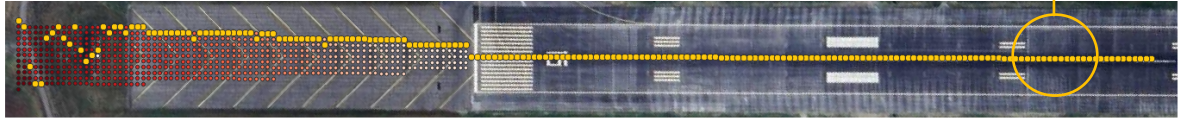


#### Smooth scalability

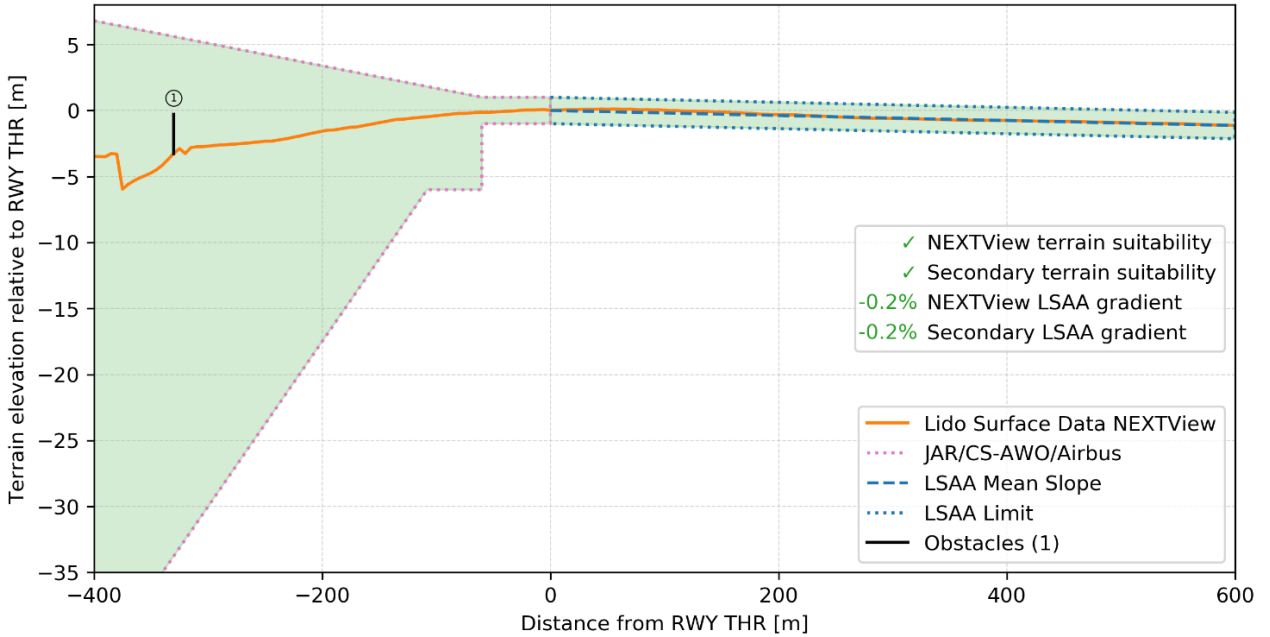
The number of runways and assessments can easily be adjusted without any impact on the delivery timeline

# Detailed Results

The analysis considers the highest terrain elevation per step in runway direction (yellow points) – with up to 6m resolution!



KBGR RWY 15 LVO Desktop Analysis



## Obstacle Details

Nr.	idnumber	Lat	Long	Type	TopElev [m]	Height [m]	EffFrom	EffTill	Source	Assessment
1	28459044	44.82045	-68.846939	Navaid	58.22	3.66	2011-01-03	UFN	eTOD	✓

## Flexibility in input and output

To provide you with the most relevant results for your use case, there are many ways in which the Lido Desktop Assessment Service can be **customized**.

The requirements, against which the data is compared, are dependent on the aircraft type. They must be provided by the original equipment manufacturers (OEM) and tuned accordingly.

As a customer, you might be interested in different parameters of the assessment area, output formats or results displayed in the report.

As a new and developing product, the Lido Desktop Assessment Service is **very flexible and adjustable**, so specific requirements can be included on a case-by-case basis.

## Monitoring service

As a runway and its vicinity change, these introduced differences can have a significant impact on the results of the desktop assessment.

Our monitoring service **tracks** the data that was used for every analysis, so that **new assessments can be run if any changes are detected**.

Monitored datasets include published runway threshold coordinates and elevation, charts, terrain, and obstacles.

The **monitoring intervals can be adjusted as desired**, from AIRAC cycle based to yearly, or whatever fits your needs best.



Contact us:  
[marketing@LHsystems.com](mailto:marketing@LHsystems.com)