



Easily accessible, high-quality aeronautical data

Lido Developer Portal

The Lido Developer Portal serves as a comprehensive hub of aeronautical data tailored for developers across a range of industries and sectors, including airlines, advanced air mobility (UAV/ UAM), flight planning, EFB applications, mapping solutions, and numerous others.

Seamless access to **EASA-certified** aeronautical data that is standardized, comprehensive, and of exceptional quality is facilitated via state-of-the-art APIs. This enables effortless integration into third-party applications.

The Lido Developer Portal offers a scalable, cloud-based solution that embraces application-agnostic processing. Our APIs are meticulously crafted to simplify integration, eliminating the burden of handling intricate aviation standards. Lido's versatile data can be seamlessly applied across a spectrum of systems and applications.

Key benefits & features



Easily accessible

Data is available as a variety of stand-alone products to serve your specific operational requirements



EASA certified base data

Fulfills all relevant industry standards and benefits from Lido FMS and Lido AMDB products with worldwide coverage



Up-to-date

Database updated every AIRAC cycle



Reliable sourcing

Collection of aeronautical data published by authoritative sources



Seamless application

Versatile data can be effortlessly utilized thanks to our geo.Json enabled formats



Detailed information

More than 3.5 million unique obstacles globally, with more than 60 attributes per obstacle.

Worldwide Coverage

Visualization of obstacles from the Lido Surface Data Obstacles database where brighter areas indicate a higher density of obstacles

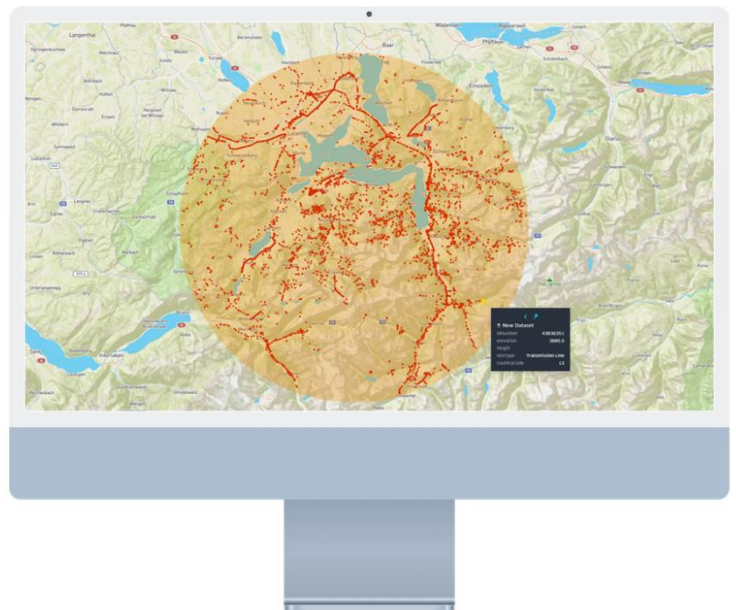


Lido Obstacle API

Lido's Obstacle API offers flexible queries including **lookup by aerodrome, point & radius, or polygon**. Obstacle data provided by Lido Obstacle API can be used for a variety of systems and applications, including drone operations, charting, flight operations, to name a few.

Obstacles in our database are extracted from authoritative (official state) sources, such as Aeronautical Information Publications (AIPs), electronic Terrain and Obstacle data (eTOD), and NOTAMs.

This endpoint enables the querying of the complete attribute information for a single or for multiple obstacles, based on the obstacle ID. Inclusive of 60 distinct properties, these include characteristics such as marking, lighting, resolution details, elevation and height.



Airspaces Truly Global

Visualization of Sky Data from the Lido database including Flight Information Regions (FIR), published airspaces, airways and waypoints

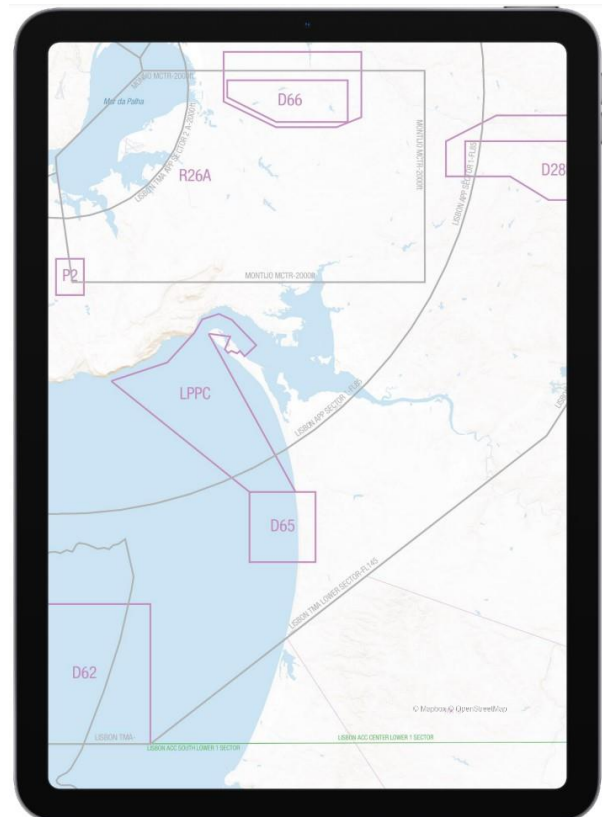


Lido Airspaces API

Lido's Airspaces API offers flexible queries including **lookup by country / FIR, route LineString or Polygon**. Airspace data provided by Lido Airspaces API can be used for a variety of systems and applications, including drone operations, charting, flight operations, to name a few.

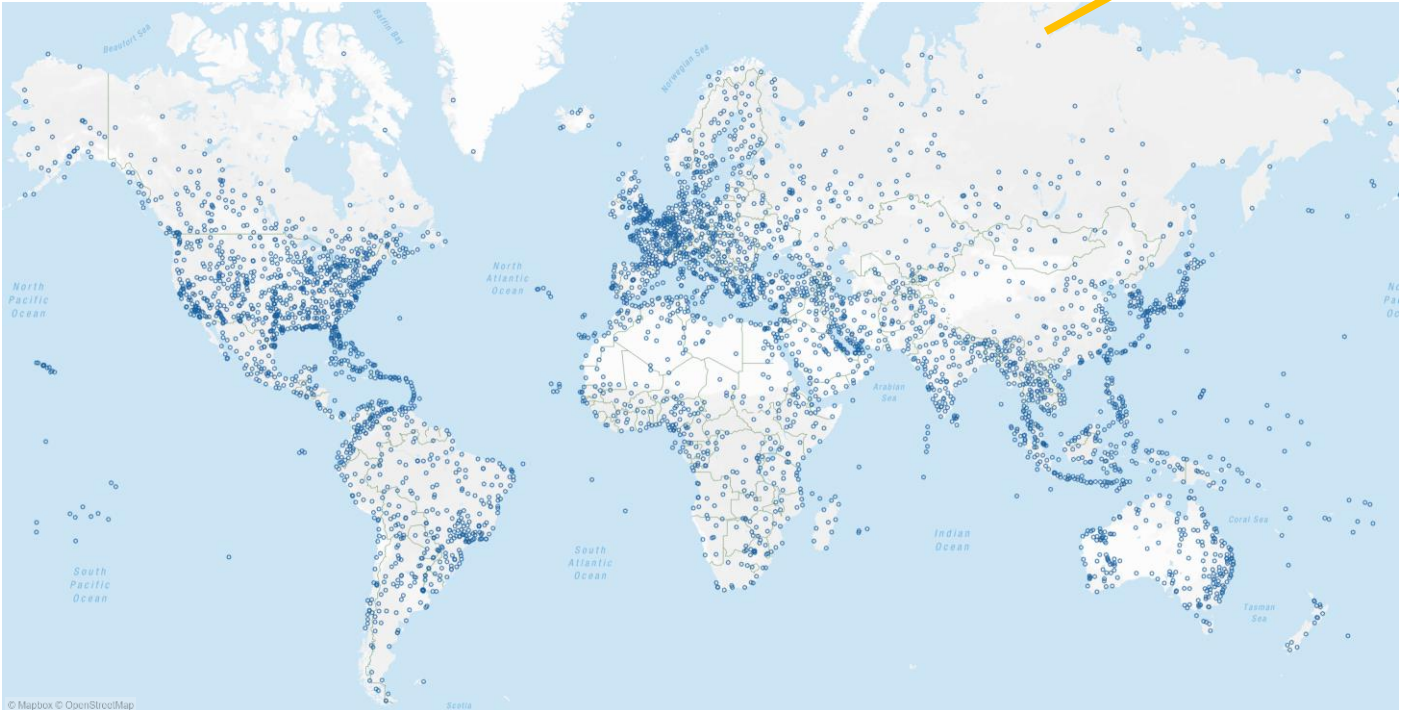
Airspaces in our database are extracted from authoritative (official state) sources, such as Aeronautical Information Publications (AIPs) and are sourced from ARINC-424 standards which power Lido FMS solutions.

This collection of endpoints allows for easy retrieval of Airspace properties, including type, class, activity / operational hours, lower and upper limits as well as accurate geometrical boundaries in geoJson format. All information is kept up-to-date on AIRAC-cycle basis.



Destination: Anywhere!

Lido Airport & Heliport APIs' global coverage ensures you have access to worldwide standardized air navigation information. Anywhere, really!

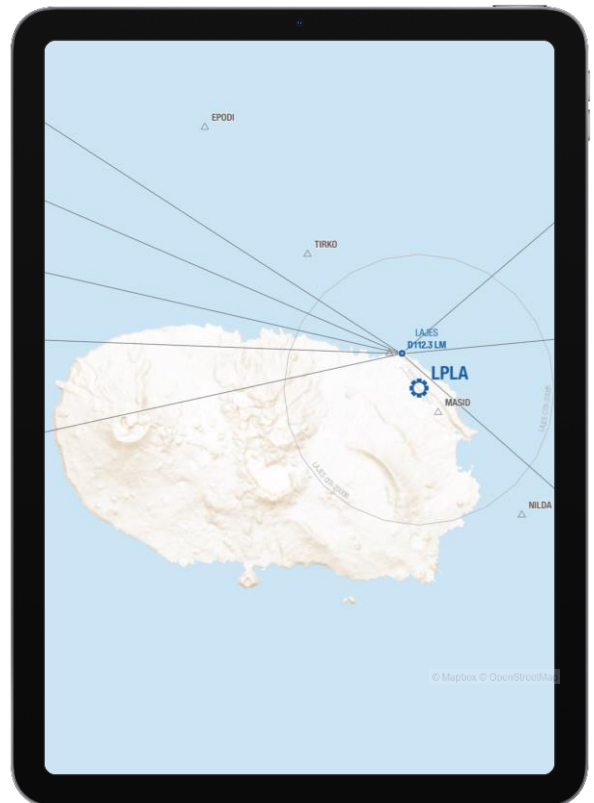


Lido Airport & Heliport APIs

Lido's Airport and Heliport APIs offer flexible queries including **lookup by country / FIR, route LineString or Polygon**. Landing Facility data provided by Lido Airport and Heliport APIs can be used for a variety of systems and applications, including drone operations, charting, flight operations, to name a few.

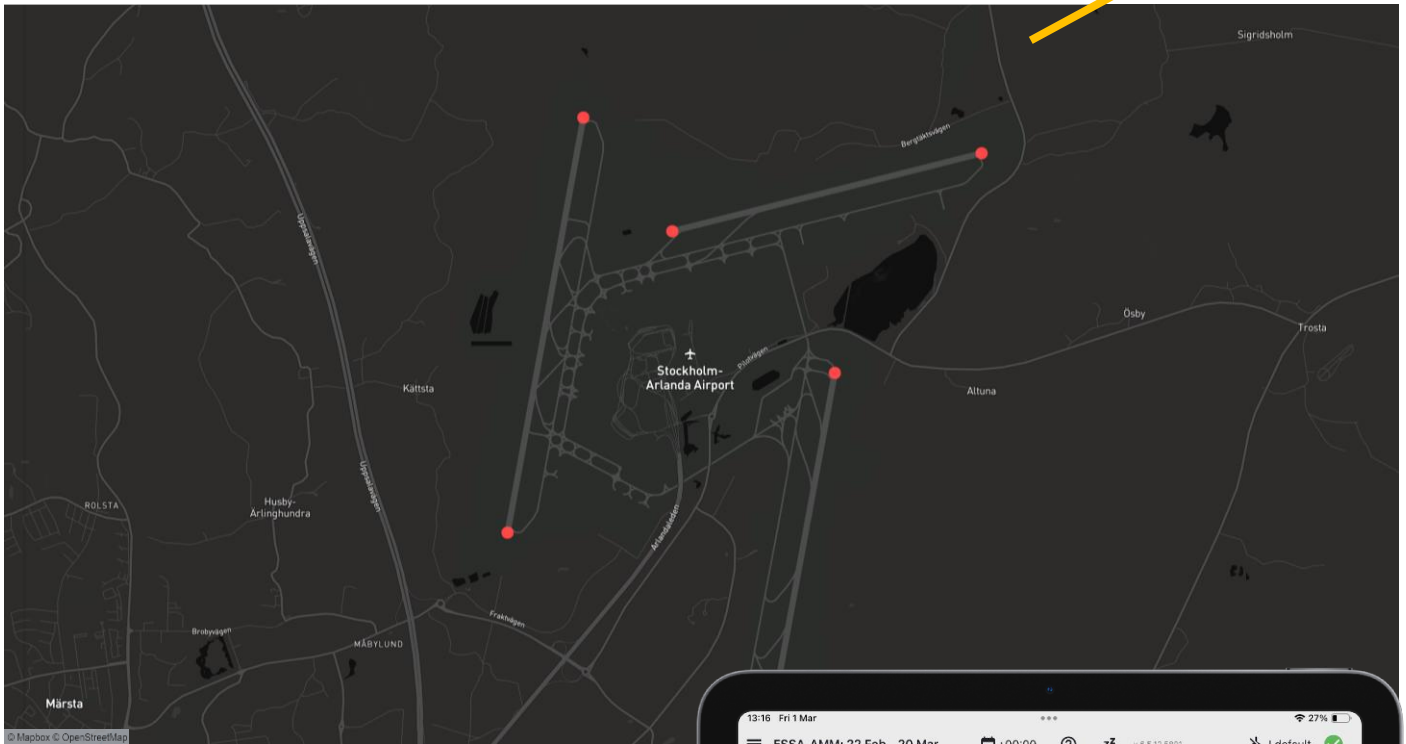
Objects in our database are extracted from authoritative (official state) sources, such as Aeronautical Information Publications (AIPs) and are sourced from ARINC-424 standards which power Lido FMS solutions.

This collection of endpoints allows easy retrieval of Airport properties, including **ICAO** and **IATA** identifiers, longest runway, elevation, magnetic variation, usage type and restrictions, **time zone shifts**, daylight savings usage, name, **times of operations** and **advanced operational information** such as RFFS, Transition Altitude and more.



Cleared for Take-off!

Lido Runway and Helipad APIs provides you all necessary information for Landing Facilities in a standardized dataset, updated every 28 days!

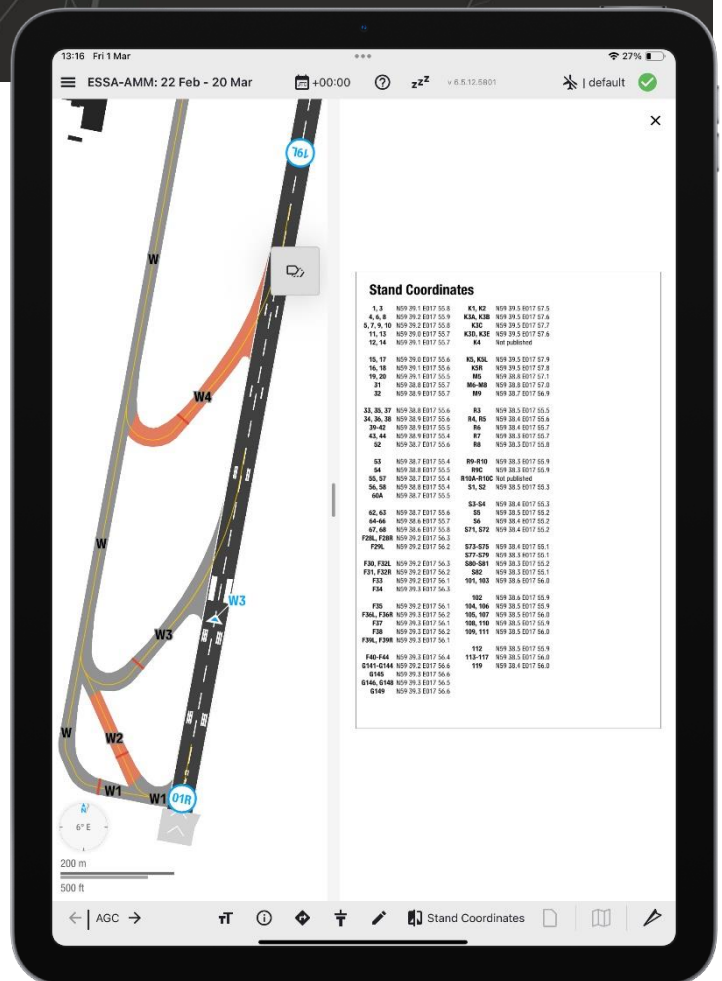


Lido Runway & Helipad APIs

Lido's Runway and Helipad APIs offer flexible queries including **lookup Airport / Heliport Identifier and by Lookup Polygon**. Landing Facility data provided by Lido can be used for a variety of systems and applications, including drone operations, charting, flight operations, to name a few.

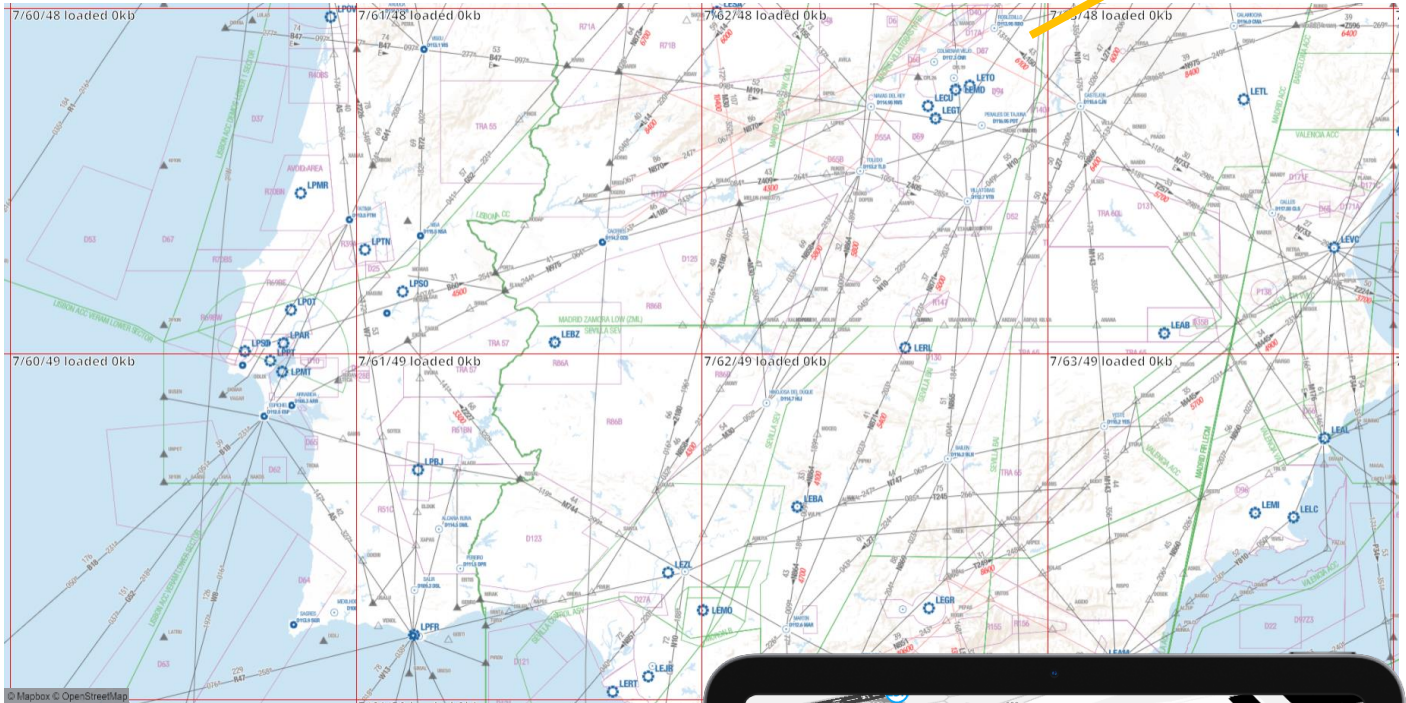
Runways and Helipads in our database are extracted from authoritative (official state) sources, such as Aeronautical Information Publications (AIPs) and are sourced from ARINC-424 standards which power Lido FMS solutions.

Runway properties include **dimensions, threshold information** (incl. TCH), **declared distances**, surface type and **PCN values, lighting information** (incl. visual slope type and slope), touchdown zone elevation, gradient, magnetic variation, detailed geometry and so much more...



Map Tile API

Lido Map APIs empower you to integrate a background layers with the same look and feel of our unique Route Manual standard in Lido mPilot and Lido eRoute Manual.



Lido Map Tile APIs

Lido Map APIs provide robust and easy-to-integrate Tile Map API endpoints (x/y/z), designed to streamline the incorporation of the Lido Route Manual Standard into mapping applications like QGIS and similar GIS platforms. Data is updated every AIRAC-cycle.

These APIs function as base layers, supporting seamless integration through standard Mapping Tile Services (MTS).

- High & Low Enroute Charts – Providing essential enroute navigation data for commercial aviation.
- Airport Moving Map (AMM) Tiling Services – Leveraging our Lido AMDB (Aerodrome Mapping Database) to enhance situational awareness with high-precision airport maps with the same look and feel of Lido mPilot and Lido eRoute Manual.

