



Lido Developer Portal

Easily accessible, high-quality aeronautical data

Aeronautical data hub

The Lido Developer Portal serves as a centralized, comprehensive hub of EASA-certified aeronautical data tailored for developers working across a diverse spectrum of industries. These include airlines, advanced air mobility (UAV/UAM), flight planning, electronic flight bag (EFB) applications, mapping solutions, and many others. Whether you're building mission-critical airline systems or next-generation air mobility solutions, the portal delivers reliable, high-integrity data to support innovation at scale.

Streamlined API access

Developers can access comprehensive, high-quality aeronautical data through modern, well-documented APIs. This enables quick, reliable integration into third-party systems, reducing development time and complexity.

Cloud-based and scalable

With a cloud-native, application-agnostic architecture, the portal is built to scale. Whether you're deploying mobile apps, onboard tools, or enterprise systems, Lido's APIs provide flexibility without the burden of managing aviation data standards.

Versatile use across systems

From navigation and mapping to real-time drone operations, Lido's data can be seamlessly applied across a variety of platforms. Designed for agility, the portal helps developers bring solutions to market faster and with confidence in data integrity.

Key benefits & features



Easily accessible

- Data is available as a variety of stand-alone products to serve your specific operational requirements.



EASA certified base data

- Fulfills all relevant industry standards and benefits from Lido FMS and Lido AMDB products with worldwide coverage.



Up-to-date

- Database updated every AIRAC cycle.



Reliable sourcing

- Collection of aeronautical data published by autoreactive sources.



Seamless application

- Versatile data can be effortlessly utilized thanks to our geoJson enabled formats.



Detailed information

- More than 3.5 million unique obstacles globally, with more than 60 attributes per obstacle.



Lufthansa Systems

Lido Obstacle API



Lido Surface Data Obstacles database where brighter areas indicate a higher density of obstacles.

Flexible obstacle queries

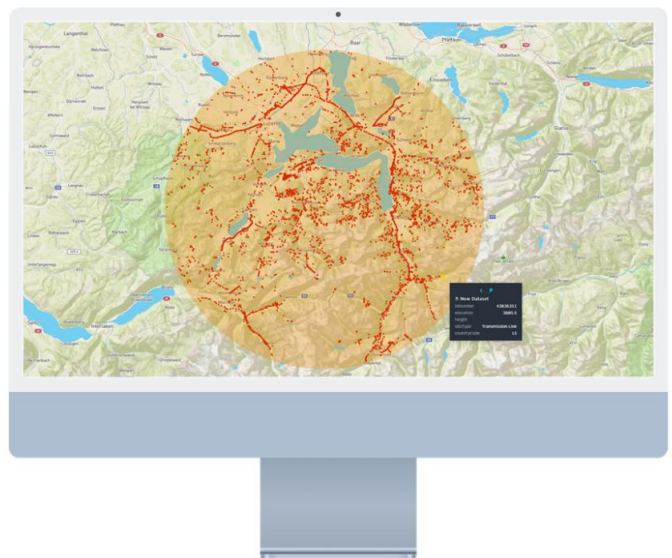
The Lido Obstacle API supports versatile query methods, including lookup by aerodrome, point and radius, or custom polygon. This flexibility makes it easy to integrate into a wide range of systems such as drone operations, aeronautical charting, and flight planning tools.

Authoritative data sources

All obstacle data is sourced from official state-authorized publications, including Aeronautical Information Publications (AIPs), electronic Terrain and Obstacle Data (eTOD), and NOTAMs. This ensures accuracy and compliance with international aviation standards.

Rich attribute access

The API allows queries by obstacle ID, enabling access to full attribute data for one or multiple obstacles. Each obstacle includes up to 60 detailed properties, such as elevation, height, marking, lighting, horizontal/vertical resolution, and more.



Lido Developer Portal	Lido Obstacle API	Lido Airport & Heliport API	Lido MAP API
	Lido Airspaces API	Lido Runway & Helipad API	Lido Charting Data API

Let's fly smarter

LHsystems.com

Lido Airspaces API



Visualization of Sky Data from the Lido database incl. Flight Information Regions (FIR), published airspaces, airways and waypoints.

Flexible airspace queries

Lido Airspaces API supports a variety of query options, including lookup by country or FIR, route LineString, or custom polygon. This versatility makes it ideal for use in drone operations, aeronautical charting, and flight planning systems.

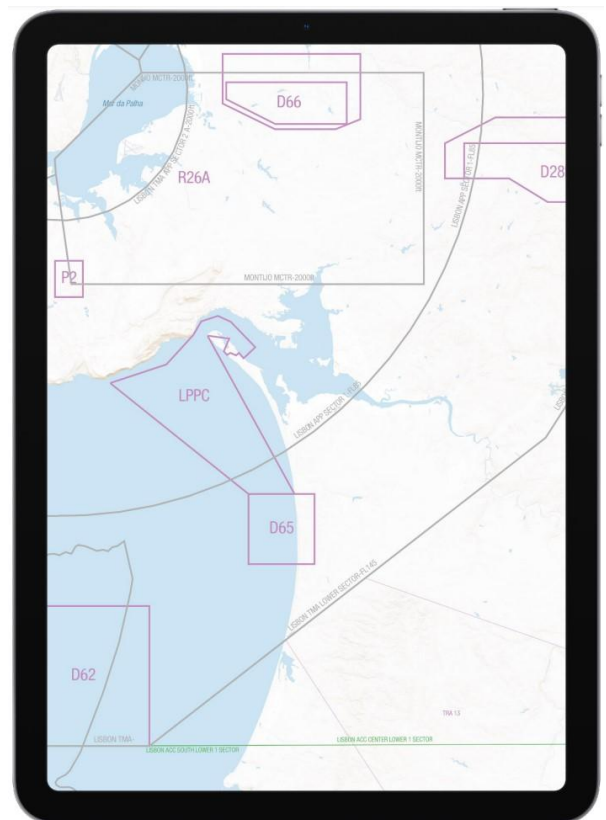
Trusted and standardized sources

Airspace data is extracted from official Aeronautical Information Publications (AIPs) and adheres to the ARINC-424 standard, the same trusted format used in Lido FMS solutions. This ensures both regulatory compliance and data integrity.

Detailed airspace attributes

The API provides access to key airspace attributes, including type, class, activity or operational hours, lower and upper altitude limits, and precise geometrical boundaries in GeoJSON format.

All data is continuously updated in sync with the AIRAC cycle, ensuring users always access the latest operational information.



Lido Developer Portal	Lido Obstacle API	Lido Airport & Heliport API	Lido MAP API
	Lido Airspaces API	Lido Runway & Helipad API	Lido Charting Data API

Lido Airport and Heliport APIs



Lido Airport & Heliport APIs’ global coverage ensures you have access to worldwide standardized air navigation information.

Versatile facility queries

Lido Airport and Heliport APIs support flexible queries, including lookup by country, FIR, route LineString, or polygon. This makes them well-suited for integration into a range of applications such as drone operations, aeronautical charting, and flight planning systems.

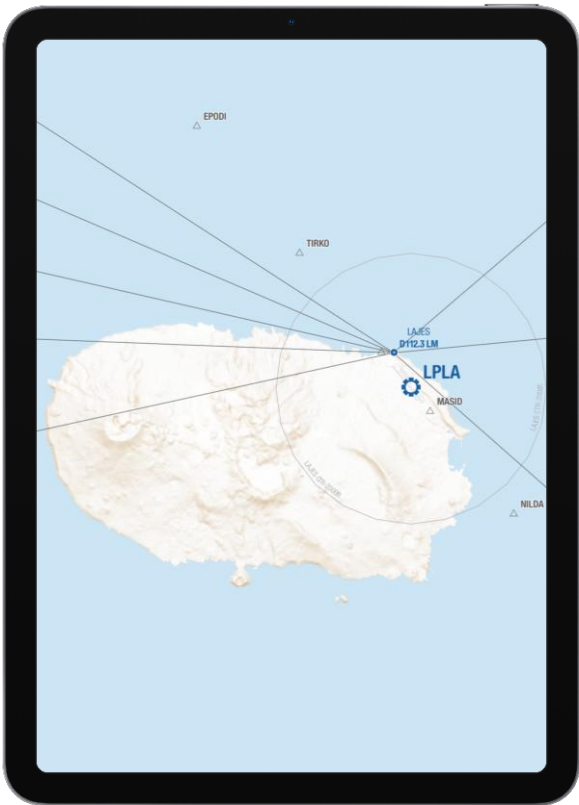
Authoritative and standardized sources

All landing facility data is derived from official Aeronautical Information Publications (AIPs) and structured according to the ARINC-424 standard, ensuring high integrity and compatibility with systems like Lido FMS.

Comprehensive facility details

These APIs provide rich attribute data for each facility, including ICAO and IATA codes, longest runway, elevation, magnetic variation, usage type and restrictions, time zone details, and operational hours.

Additional attributes include advanced operational parameters such as Rescue and Fire Fighting Services (RFFS), transition altitude, and more—supporting both general and specialized aviation use cases.

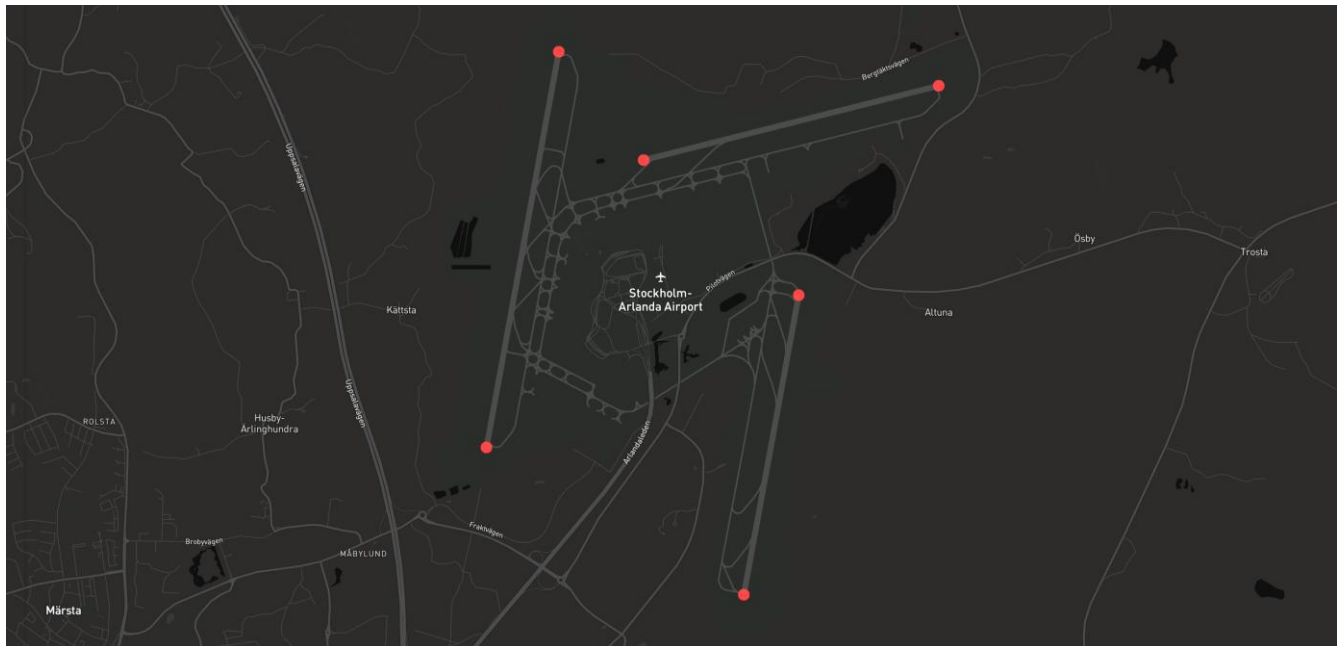


Lido Developer Portal	Lido Obstacle API	Lido Airport & Heliport API	Lido MAP API
	Lido Airspaces API	Lido Runway & Helipad API	Lido Charting Data API

Let’s fly smarter

LHsystems.com

Lido Runway and Helipad APIs



Lido Runway and Helipad APIs provides all necessary information for landing facilities in a standardized dataset, updated every 28 days.

Flexible facility queries

Lido Runway and Helipad APIs support lookup by airport/heliport identifier or custom polygon, enabling integration into systems for drone operations, flight planning, charting, and more.

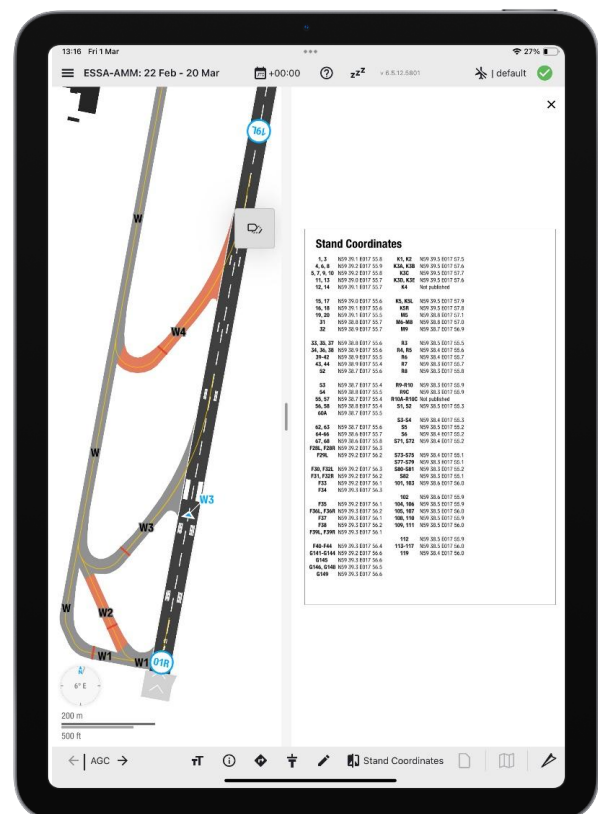
Authoritative data sources

Data is extracted from official Aeronautical Information Publications (AIPs) and structured according to ARINC-424 standards, the same format used in Lido FMS solutions, ensuring quality and consistency.

Comprehensive runway details

Access detailed runway and helipad attributes, including:

- Dimensions and declared distances
- Threshold data (incl. TCH)
- Surface type and PCN values
- Lighting info (incl. visual slope type and slope)
- Touchdown zone elevation, gradient, magnetic variation, and geometry

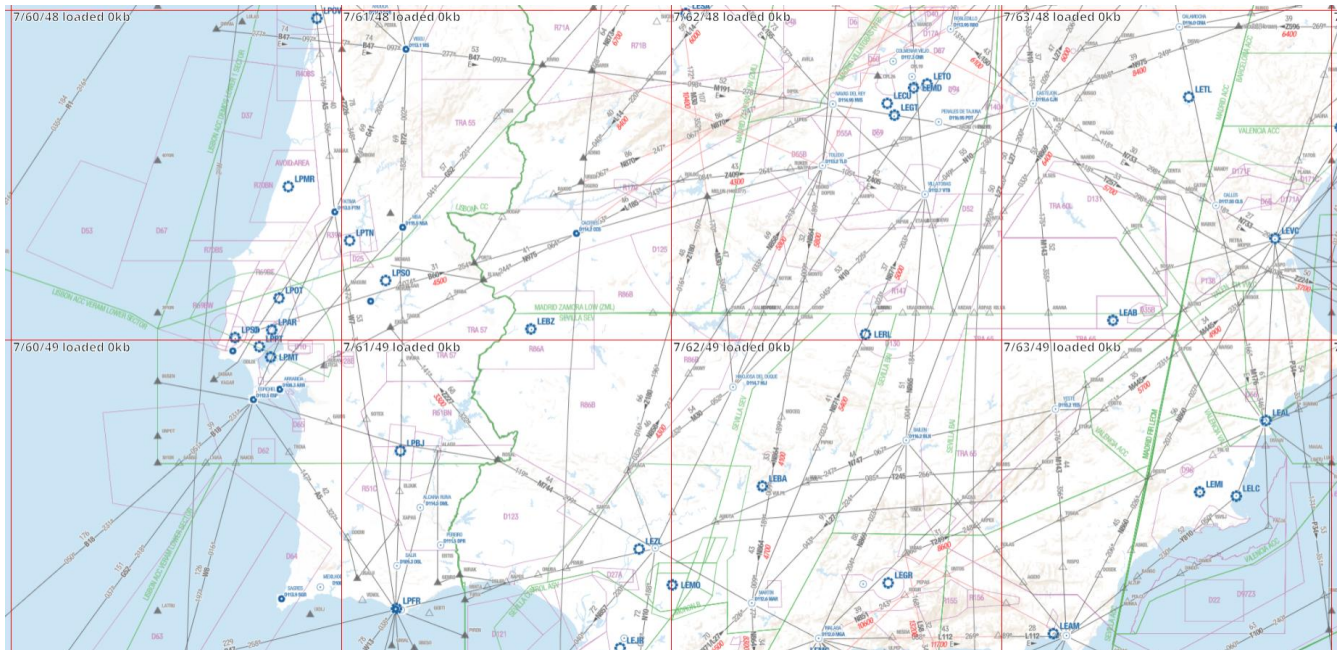


Lido Developer Portal	Lido Obstacle API	Lido Airport & Heliport API	Lido MAP API
	Lido Airspaces API	Lido Runway & Helipad API	Lido Charting Data API

Let's fly smarter

LHsystems.com

Map API



Map APIs enable you to integrate background layers with the same look and feel of Lido mPilot and Lido eRM.

Tile-based mapping integration

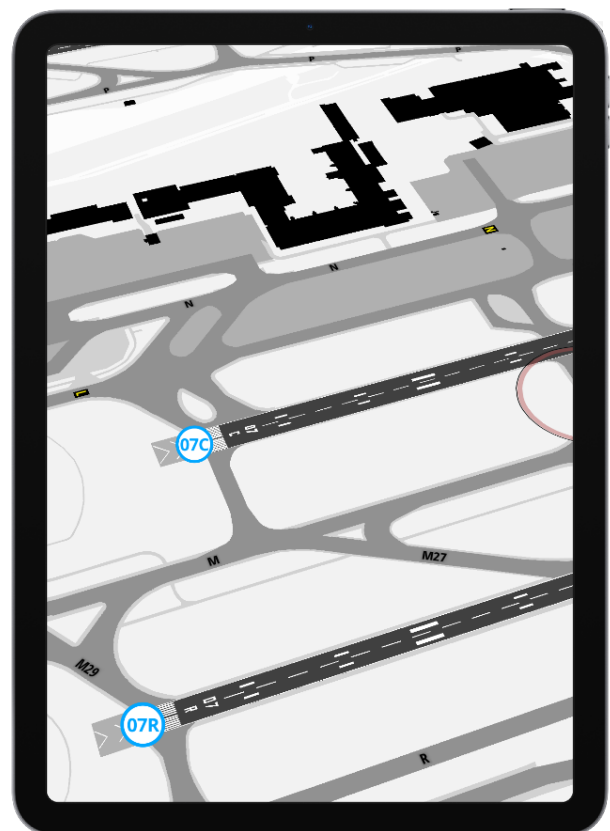
Lido's Map APIs offer robust and easily integrable Tile Map endpoints (x/y/z), enabling seamless integration of Lido Route Manual Standards into GIS platforms such as QGIS and others. All data is updated every AIRAC cycle, ensuring accuracy and relevance.

Standards-based compatibility

These APIs operate as base map layers using standard Mapping Tile Services (MTS), making them easy to integrate into existing systems with minimal setup.

Available tiling services

- **High & low enroute charts:** delivers essential enroute navigation data designed for commercial aviation use.
- **Airport Moving Map (AMM) tiles:** built using the Lido Aerodrome Mapping Database (AMDB), these tiles support situational awareness through high-precision airport maps that maintain the same look and feel as Lido mPilot and Lido eRM.

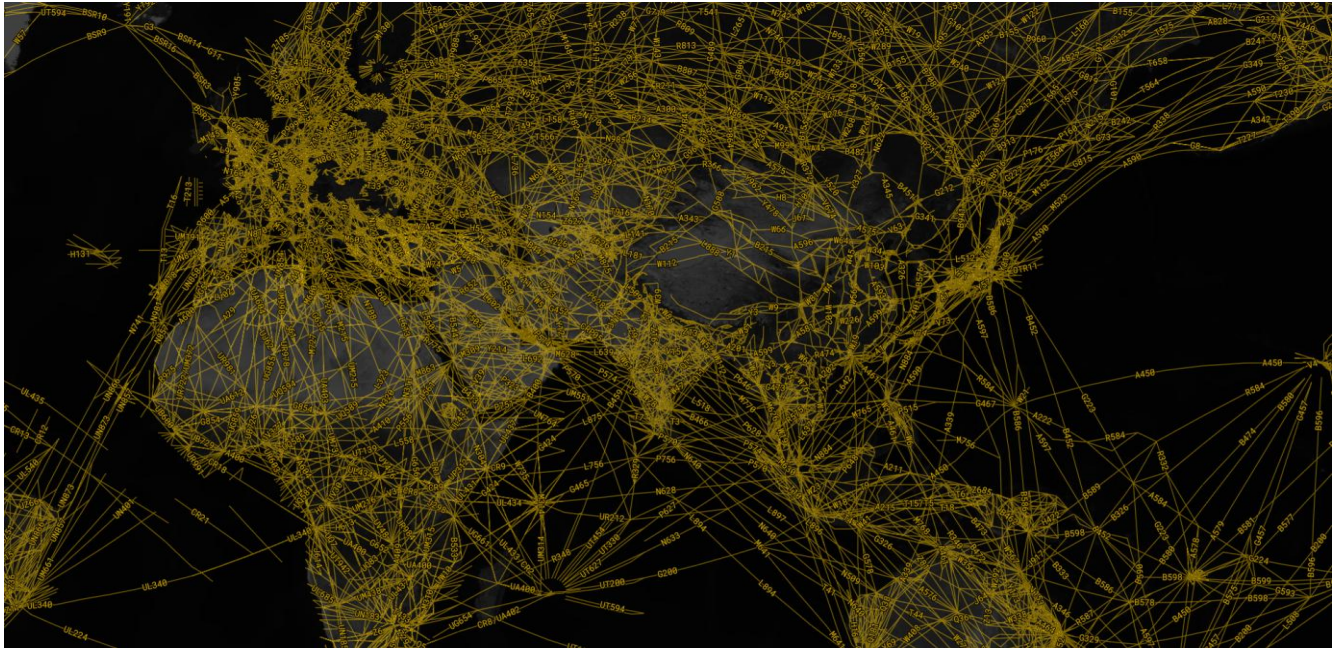


Lido Developer Portal	Lido Obstacle API	Lido Airport & Heliport API	Lido MAP API
	Lido Airspaces API	Lido Runway & Helipad API	Lido Charting Data API

Let's fly smarter

LHsystems.com

Charting Data API



Lido Charting Data APIs deliver the core data behind Lido mPilot and Lido eRM, ensuring consistency across applications.

Lido Charting Data APIs

Lido Charting Data APIs provide seamless access to the same high-quality aeronautical data used in Lido mPilot and Lido eRM, ensuring consistency for flight operations and mission planning.

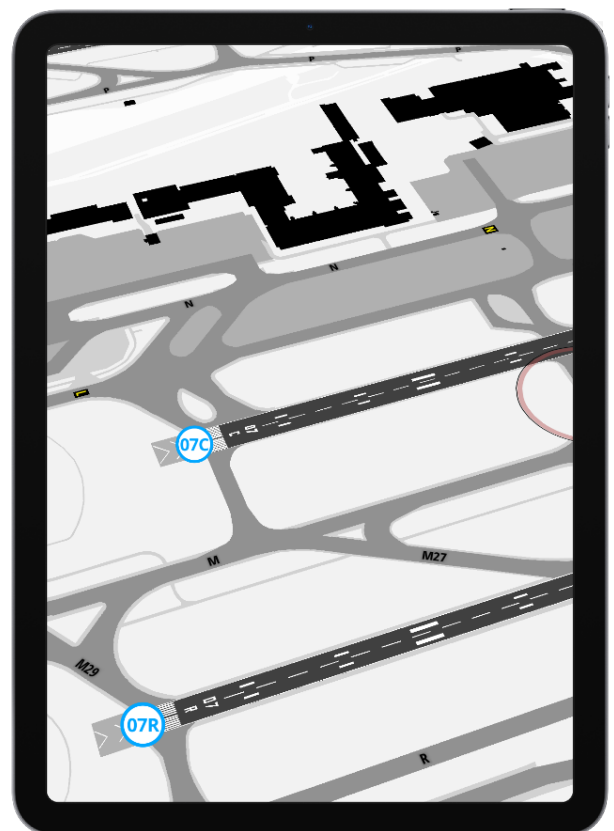
AIRAC-aligned and globally comprehensive

Updated on every AIRAC cycle, these APIs offer accurate, up-to-date data essential for aviation systems.

Available datasets include:

- Airways: high & low enroute structures for efficient routing
- NavAids: VORs, NDBs, DMEs for precision navigation
- Waypoints: global fixes for seamless route planning
- Additional Data: including Airspaces, Airports, and Runways

For more information please contact
marketing@LHsystems.com



Lido Developer Portal	Lido Obstacle API	Lido Airport & Heliport API	Lido MAP API
	Lido Airspaces API	Lido Runway & Helipad API	Lido Charting Data API

Let's fly smarter

LHsystems.com