

SEURP EDDFEDCADEVO ED0
R D N49570620E008202469
E0020 WGE P ADEVO
052541613

```
<AIRPORT>
<IATA>FRA</IATA>
<ICAO>EDDF</ICAO>
<DomesticId> />
<TypeC> />
<Usage> />
<AirportPoint_ID>
<Latitude>D00.68.033305555555567</Latitude>
<Longitude>D00.8.570455555555562</Longitude>
</AirportPoint_ID>
<AirportPoint>
<Latitude>N50015990</Latitude>
<Longitude>E008341364</Longitude>
</AirportPoint>
<DatumCode>WGE</DatumCode>
<Elevation>344</Elevation>
<IFR>Y</IFR>
</AIRPORT>
```

Data in line with ARINC 424 and other relevant industry standards.



Key use cases

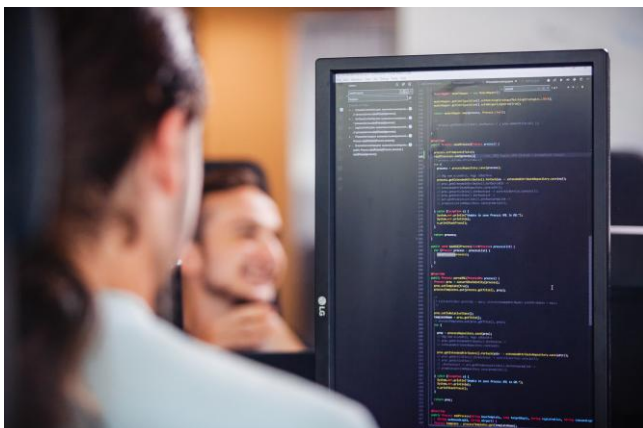
Lido Sky Data supports a wide variety of operational, analytical, and simulation applications, including:

- Creation of simulated environments for flight simulators
- Flight planning and route optimization
- Route analysis and performance studies
- Air traffic management and airspace modeling
- Geofencing solutions
- Drone/UAV navigation
- Synthetic vision systems (SVS)
- Automation and digitalization of aeronautical processes

Accurate, compliant, and continuously refreshed.

Lido Sky Data is fully aligned with ARINC 424 and key industry standards including RTCA DO-200 and DO-201, ensuring accuracy and regulatory compliance. Updated every 28 days in accordance with the AIRAC cycle, the data stays consistently current.

A wide range of export formats and an extensive data catalogue make it easy to fully tailor the solution to your specific systems and applications.



For more information please contact
marketing@LHsystems.com

Let's fly smarter

LHsystems.com